



2801 N Lincoln Blvd, Ste. 130
Oklahoma City, OK 73105-4203
Office: (405) 525-8906
Fax: (405) 525-8973
www.okacte.org

Skye McNiel | Executive Director

OKLAHOMA ASSOCIATION OF CAREER AND TECHNOLOGY EDUCATION

Dear New Professional,

On behalf of the Oklahoma Association of Career and Technology Education, I would like to welcome you to the OkACTE and the CTE family.

I would personally like to thank you for your commitment toward providing students with the skills and training necessary to be successful in this ever-changing working environment. Your leadership toward these efforts is creating a workforce that will help propel our state as a leader in business development, which will ultimately lead to an enhanced quality of life for all Oklahomans.

We are looking forward to an amazing year of professional development, leadership activities, advocacy work and so much more. None of this would be possible without our OkACTE leaders, countless members who volunteer their time and talents and each person who pours their heart and soul into CTE. This association takes all of us to ban together and continue the work that our founders Tuttle, Alexander and Perky started many years ago.

What we are doing, as a system, is making an impact on Oklahoma that will last for generations. We must stay united, we must stay focused on our mission, and we must continue to challenge our students in the most innovative, out of the box way that only Oklahoma CareerTech can do.

Thank you for you for being a vital part of OkACTE and thank you for becoming part of the best CareerTech system in the nation. Please let me know how we can serve you and help you in your professional journey.

Sincerely,

A handwritten signature in blue ink that reads "Skye McNiel".

Skye McNiel
OkACTE Executive Director

Oklahoma ACTE MEMBERSHIP

Since 1929, the Oklahoma ACTE (formerly the Oklahoma Vocational Association) has provided members with the resources they need to enhance their skills. With over 4,000 members, Oklahoma ACTE is recognized as a dynamic educational leadership organization. Oklahoma ACTE works with its national affiliate, the Association for Career and Technical Education (ACTE), to help its members stay on the cutting edge of education, family, workplace and community development. Oklahoma ACTE's members are the backbone of career and technology education and workforce education policy development in Oklahoma.



Our Mission

The mission of OkACTE is to develop and execute vetted strategies that promote and recognize excellence and provide a voice for our members and stakeholders.

Our Vision

OkACTE is a member driven, value-added organization committed to making positive and significant impacts on the professional success of our members and stakeholders through quality opportunities.

Our Goals

- Professional and leadership development and delivery of professional development to our membership.
- Create relationships and communications with public policy makers through staff and membership involvement.
- Provide relevance to education through partnerships with business and industry.
- Recognize innovative professional strategies of our membership.

OkACTE Executive Officers 2021-2022



Kristal Sack
Tulsa Technology Center
President



Ricky Wilkinson
Autry Technology Center
President-Elect



Rana McVay
Tulsa Technology Center
Past President

OkACTE Structure

There are three organizational bodies within OkACTE: CareerTech Administrative Council (CTAC), the Oklahoma Association for Career and Technical Education (OkACTE) and the Oklahoma Association of Technology Centers (OATC). CTAC is the governing board that directs the office of the Executive Director of OkACTE and OATC. OATC is the governing body that promotes and fosters career and technology education and provides professional development and service for board members and superintendents and leadership advancement of career and technology education.



CareerTech Administrative Council Executive Committee

- Chairman of CTAC
- Vice Chair of CTAC
- OkACTE President
- OkACTE President Elect
- OATC President
- ODCTE Director (ex-officio)

CareerTech Administrative Council (CTAC)

- OkACTE President
- OkACTE President-elect
- One Representative from each OkACTE Division
- OkACTE Division Presidents
- OATC President
- OATC Past President & President Elect
- OATC Board Members

OkACTE

OkACTE Executive Committee

- OkACTE President
- President-elect
- Past President
- OkACTE Division Presidents
- OkACTE Executive Director (Non-Voting Ex-officio)
- ODCTE State Director (Non-Voting Ex-officio)

OkACTE Membership Divisions

- Administration
- Agricultural Education
- Business, Marketing Information Technology Education
- Education Services– Special Populations (ESSP)
- Family & Consumer Sciences Education
- Guidance
- Health Careers Education
- New and Related Services
- Postsecondary Adult Career Education
- Retirees
- Science, Technology, Engineering, Math (STEM)
- Trade and Industry Services

OATC

OATC Executive Committee

- President
- President Elect
- Past President
- One Board Member and Superintendent from the OATC Board of Directors
- OkACTE/OATX Executive Director (Ex-Officio)
- ODCTE State Director (Ex-Officio)

OATC Board of Directors

- OATC President
- President-elect
- Past President
- OATC Fiscal Officer
- (4) Superintendents
- (4) Board Members
- ODCTE State Director (Ex-Officio)
- (2) OSSBA District 15 Representatives (Ex-Officio)

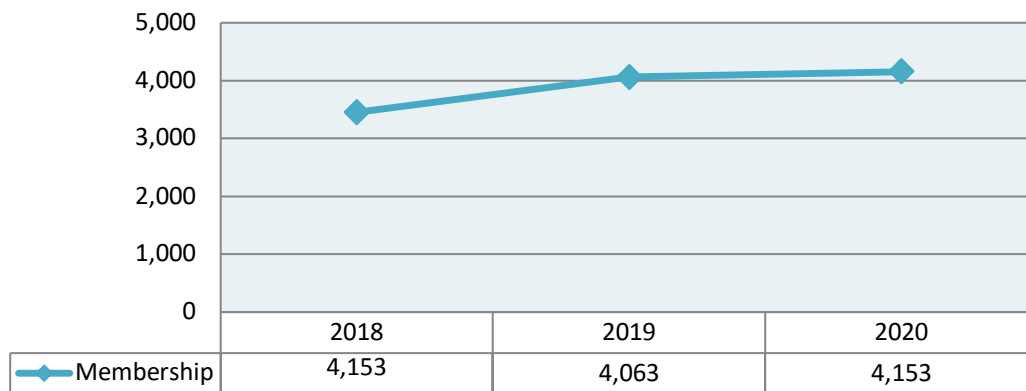
OATC Membership

- (29) Technology Center Districts
- Technology Center Board of Education Members
- Technology Centers Superintendents
- Mid-Del Public Schools Superintendent

OkACTE Membership

The foundation for everything we do at OkACTE is our membership; we are member-centered and member-driven. We are pleased to announce that over the past three years we have increased membership by 700, bringing our total membership to more than 4,000. This increase allows us to capitalize on more unity, more impact and more advocacy. We are always striving to increase benefits and added value and that will continue to be our goal. Thank you for being a member and we hope that our service to you is valuable and impactful.

Membership Review



Membership Types

Several types of OkACTE/ACTE membership are available, based on the following eligibility requirements:

- Affiliate:** **\$60- OkACTE** Individuals with career & technology education who are from states with unified state associations pay both state and national dues. Oklahoma is a unified state and all members other than Support Staff are required to pay both.
- \$80 - ACTE**
- Loyalty:** **\$46 (Retiree)** Individuals concerned with career & technology education that are retired.
- Division:** **\$10 - \$190** National and state dues are set by each division's governance board and vary in each division.

Did you know?

The OkACTE Membership Dues Installation Plan allows members to join or renew their membership through installment payments. Available in (2) options, 2-installment payments or 4-installment payments, this can assist with the burden of submitting membership payments at the beginning of the school year. Check out more regarding the [OkACTE Membership Dues Installation Plan](#) on the website.



MEMBERSHIP DUES INSTALLMENT PLAN

OkACTE is excited to offer members the opportunity to join or renew their membership with the **OkACTE Membership Dues Installation Plan!** This opportunity is available to OkACTE members whose annual dues total \$100 or more.

Terms and Conditions

1. I agree to pay my OkACTE Membership Dues Installment Plan balance under the terms of the plan (includes a \$2.00 fee for each installation payment). *Total dues minimum \$100 to participate.
2. I understand that conference registration and contributions to scholarships, funds and add-ons such as OkACTE PAC **are not eligible** for the OkACTE Membership Dues Installment Plan.
3. I agree that the plan can't be changed or cancelled after it is approved.
4. I agree my account will have the available funds as indicated by my payment option and division fees.
5. I understand I can choose to pay for both primary division and secondary division dues amount.
6. I understand that all payments must be submitted to OkACTE by October 21, 2021 to be in good standing for the 2021-2022 year.

4 payment installments

7. I understand the completed OkACTE Membership Dues Installment Plan form must be received in the OkACTE office by March 31, 2021 to enroll for the 4-payment installation plan (June – September).
8. I agree to update my registration on the Oklahoma Summit website, **conference.okacte.org** by May 31, 2021 to process my initial payment. Select **OkACTE MDIP** at check out.

2 payment installments:

9. I understand the completed OkACTE Membership Dues Installment Plan form must be received in the OkACTE office by August 6, 2021 to enroll for the 2-payment installation plan (September & October).
10. I agree to update my registration on the Oklahoma Summit website, **conference.okacte.org** by August 6, 2021 to process my initial payment. Select **OkACTE MDIP** at check out.

Insufficient Funds Policy

1. **Insufficient Funds Fee.** If I fail to pay, I understand I will be charged a \$25 insufficient funds fee and will be responsible for the remaining balance which must be submitted by **credit card or money order**.
2. **Lose Eligibility for Payment Plan.** If a payment is submitted and returned as insufficient funds, I understand I will be removed from the OkACTE Membership Installment Plan.

Installment Payment Guidelines

Participants must choose an installation plan and day of payment from below. All payments are completed by Automatic Clearing House (ACH). Checking account information must be provided.

Payments in 2 installments: Transactions to be made in September and October on designated day.

Payments in 4 installments: Transactions to be made in June, July, August and September on designated day.

Day of Payments: Participants must choose from the 5th or 20th for monthly installment payments.

Division Membership Dues

1. To participate in the OkACTE Membership Dues Installment Plan there is minimum total membership dues amount of \$100.
2. Division membership dues include OkACTE dues (\$60), ACTE dues (\$80) and Divisional dues (both national and state dues).
3. Installation payments for primary membership dues are outlined in the **Primary Division Dues Chart**.
4. Secondary dues can be included in the OkACTE Membership Dues Installation Plan. The additional charge for secondary division dues is explained in the **Secondary Division Dues Add-On Chart**. The amount in the Secondary Division Dues Add-On Chart is added to the total of your installation plan.

Primary Division Dues Chart

Division	2 Installments	4 Installments
ADM OkCTEEC	\$92.00	\$47.00
Administration (ADM)	\$92.00	\$47.00
Agricultural Education (AG)	\$167.00	\$84.50
Agricultural Education ABM	\$127.00	\$64.50
Business, Marketing, Information Technology Education (BMITE)	\$84.50	\$43.25
Communication & Marketing (C&M)	\$77.00	\$39.50
Curriculum, Instruction and Assessment (CIA)	\$82.00	\$42.00
Family Consumer Sciences (FCS)	\$89.50	\$45.75
General & Related Subjects	\$77.00	\$39.50
Counseling & Career Development (CCD) <i>*previously Guidance</i>	\$82.00	\$42.00
Health Education Careers (HEA)	\$82.00	\$42.00
Information Technology (IT)	\$82.00	\$42.00
Makers of Policy	\$77.00	\$39.50
Personnel Development	\$77.00	\$39.50
Postsecondary Adult Career Education (PACE)	\$82.00	\$42.00
Science, Technology, Engineering and Math (STEM)	\$84.50	\$43.25
Special Populations (ESSP)	\$82.00	\$42.00
Support Staff (SS)*	\$62.00	\$32.00
Trade and Industrial Education (T&I)	\$78.00	\$40.00

***Support Staff is only eligible for the payment plan if they choose to include national ACTE dues.**

Secondary Division Dues Add-On Chart

If you choose to add a secondary division, below is the payment cost to add to your primary dues amount from the Primary Division Dues Chart.

Division	2 Installments	4 Installments
ADM OkCTEEC	\$20.00	\$10.00
Administration (ADM)	\$20.00	\$5.00
Agricultural Education (AG)	\$95.00	\$47.50
Agricultural Education ABM	\$55.00	\$27.50
Business, Marketing, Information Technology Education (BMITE)	\$12.50	\$6.25
Communication & Marketing (C&M)	\$5.00	\$2.50
Curriculum, Instruction and Assessment (CIA)	\$10.00	\$5.00
Family Consumer Sciences (FCS)	\$17.50	\$8.75
General & Related Subjects	\$5.00	\$2.50
Counseling & Career Development (CCD) *previously Guidance	\$10.00	\$5.00
Health Education Careers (HEA)	\$10.00	\$5.00
Information Technology (IT)	\$10.00	\$5.00
Makers of Policy	\$5.00	\$2.50
Personnel Development	\$5.00	\$2.50
Postsecondary Adult Career Education (PACE)	\$10.00	\$5.00
Science, Technology, Engineering and Math (STEM)	\$12.50	\$6.25
Special Populations (ESSP)	\$10.00	\$5.00
Support Staff (SS)*	\$7.00	\$4.50
Trade and Industrial Education (T&I)	\$6.00	\$3.00

***Support Staff is only eligible for the payment plan if they choose to include national ACTE dues.**

**** Additional divisions may require an additional \$10 payment, paid directly to ACTE. See our website for more information.**



MEMBERSHIP DUES INSTALLMENT PLAN

OkACTE is excited to offer members the opportunity to join or renew their membership with the OkACTE Membership Dues Installation Plan! This opportunity is available to OkACTE members whose annual dues total \$100 or more.

Here's How it Works:

- Complete this Membership Dues Installment Plan Enrollment Form
- Join or renew on-line only (conference.okacte.org). Select the Membership Dues Installment Plan option at checkout.
- Dues must total \$100 or more for participation.
- All installment payments are completed as an ACH charge.
- The first installation payment will be charged based on your selected plan and day of the month as indicated below.
- A \$2.00 transaction fee has been added in the calculation for each installment.
- If your installment payment fails, you will be charged \$25 for insufficient funds and removed from the OkACTE Membership Dues Installment Plan. Total payments must be completed by the end of September.
- The completed form must be submitted to OkACTE by March 31, 2021 to enroll for 4 payment installments.
- The completed form must be submitted to OkACTE by August 7, 2021 to enroll for 2 payment installments.

YES! I want to participate in the OkACTE Membership Dues Installment Plan!

Name	Last 4 of SSN
Email	
Home Address	
School/Institution	
Job Title/Position	

Customize Your Payment Plan

Choose an Installment Plan:	2 Installation Payments (September & October)	4 Installation Payments (June - September)
Select a day for your monthly ACH:	5th	20th

Membership Division

Primary Division:

Secondary Division:

ACH Banking Information

Financial Institution:

Bank Routing Number:

Account Number:

I authorize OkACTE to ACH from my account for monthly installments for my 2021-2022 membership dues.

Member Signature Required

This form must be completed and submitted to the OkACTE office to enroll in the OkACTE Membership Installment Plan. Forms can be submitted electronically to cjones@okacte.org or mailed to OkACTE, 2801 N. Lincoln Blvd. Ste. 130, Oklahoma City, Ok 73105.

OkACTE DIVISIONAL MEMBERSHIP

Your membership includes a division. The divisions represent the content area focus and/or special interest group of the member. The divisions provide a specific identity to career and technical educators beyond their state or region; members are also identified by the type of career and technical education they provide or represent. These divisions are also included in your OkACTE membership and are represented on state level.

OkACTE DIVISIONS

OkACTE has 12 membership divisions. An elected President represents each Division as a member of the Executive Committee. The President leads their divisional officers and committee chairs.

- ADMINISTRATION DIVISION (ADMIN)
- AGRICULTURAL EDUCATION DIVISION (AG)
- BUSINESS, MARKETING AND INFORMATION TECHNOLOGY DIVISION (BMITE)
- COUNSELING & CAREER DEVELOPMENT DIVISION (CCD)
- EDUCATION SERVICES -SPECIAL POPULATIONS (ESSP)
- FAMILY CONSUMER SCIENCE DIVISION (FCS)
- HEALTH EDUCATION DIVISION (HEA)
- NEW & RELATED SERVICES (NRS)
- POSTSECONDARY ADULT CAREER EDUCATION (PACE)
- SCIENCE, TECHNOLOGY, ENGINEERING AND MATHEMATICS DIVISION (STEM)
- SUPPORT STAFF (SS)
- TRADE & INDUSTRIAL EDUCATION (T&I)

Each division has committee chairs that are appointed or elected to serve on each of the OkACTE standing committees.

OkACTE Political Action Committee

The OkACTE PAC is an organization with a purpose to raise money and help finance the campaigns of candidates sensitive to the interests of OkACTE members. The OkACTE PAC allows Oklahoma career and technology educators to pool financial resources providing more substantial influence on the political process.

OkACTE/CCOSA Mutual Benevolence Program

OkACTE & CCOSA Mutual Benevolence Plan (MBP) organizes and facilitates the voluntary, monetary contributions to the beneficiary of an eligible member upon the death of that member. Each program participant contributes \$10.00 to the Mutual Benevolence Plan fund to provide financial assistance to the beneficiary of an active member of the program.

Diversity Action Committee

The Diversity Action Committee serves to untie the profession of career and technology and advocate awareness of diversity among OkACTE, the students that are taught, and businesses in which our members are involved.

CareerTech Administrative Council Executive Committee

The CareerTech Administrative Council Executive Committee is the governing body that directs the operations of the Oklahoma Association of Career and Technology Education and the Oklahoma Association of Technology Centers, Inc.

Membership Services Committee

The Membership Services Committee serves as an advisory board for the OkACTE membership services. This group annually evaluates the programming that has been implemented, and reviews prospective programming annually.

Membership Benefits

Our success relies on membership involvement and engagement. Strengthening and supporting out membership is at the forefront of our engagement as we continue to climb in membership. With increasing membership numbers we have increased our efforts to communication with membership. You can stay abreast of events, changes in legislation, and media surrounding the Oklahoma CareerTech system by engaging with us using the following tools below.

Membership Emails

Stay in the loop of the events and news involving the Oklahoma CareerTech system. These emails are for members only.

Legislative Updates

During the Legislative Session, these emails update membership on the bills that are hot topics for the OkACTE members. These emails are typically sent at the end of each week during Legislative Session (February – June).

ICYMI Emails

In Case You Missed It emails are highlights and links from media coverage throughout the state regarding programs and news about the Oklahoma CareerTech system. You can be added to these emails by request. Contact Dazsa Carter at dcarter@okacte.org for details.

On-line voting

Voting is made much easier with a click from your phone! Members are now able vote on membership measures via email. The records are charted by member and given to the proctors with ease.

Retirement and Investment Planning

Annual workshops are presented that will give you tools to make informed decisions about your journey to and beyond retirement.

OkACTE Website

Members have a one-stop-shop for all things OkACTE with the OkACTE website. Learn more about our programming, sponsorship programs and more at www.okacte.org.

OkACTE App

Download the OkACTE app for free in the Apple App Store or GooglePlay. This app is used for all OkACTE events, to keep members engaged with news and more.

Retirement and Investment Planning

Annual workshops are presented that will give you tools to make informed decisions about your journey to and beyond retirement.

OkACTE/CCOSA Mutual Benevolence Plan

OkACTE has partnered with CCOSA to offer a death plan for members and spouses. In the event of the death of a member or spouse the beneficiary will receive a check from OkACTE to help defray the costs incurred.

Enrollment available ONLY during the first three years of employment.

Professional Liability Insurance

For just **\$40 per year** PLI covers up to \$1,000,000 per insured per occurrence plus the cost of defense, investigation, and legal fees. It also covers up to \$10,000 per member per claim for attorney fees and up to \$1,000 premium on bail bonds.

This brief description of the policy is to provide information only to members and in no way alters or modifies the policy on file with the Association. If you would like to receive a copy of the policy or have questions, please call Carmen Jones at (405)525-8906.

Cost of Professional Liability Insurance

Insurance premium per member - \$28.00

Insurance Tax and Fees (6%) - \$1.56

OkACTE Association Service Fee - \$10.44

TOTAL \$40.00

OkACTE Fellows Program



The OkACTE Fellowship program was established to provide leadership development for CTE professionals to further their development in professional associations. This program is designed to identify, train and motivate a cadre of leaders who will continue to position the Oklahoma CareerTech system as a leader in developing an educated, prepared, adaptable and competitive workforce. The Fellowship program is a one-year commitment from September to August.

CCOSA/OkACTE Mutual Benevolence Plan (MBP) Guidelines

Program Component	Program Guideline
Enrollment Window	Within the first 3 years of OkACTE membership or when the board approves open enrollment
Eligibility to Participate	<p>Active and Retired OkACTE Members and their Spouses</p> <p>Retired members must have been a member of the plan at least (5) years prior to their retirement. They are also required to maintain their OkACTE/ACTE Loyalty Membership dues.</p> <p>Newly married participants can enroll their spouses within 60 days after their marriage</p>
Update to Membership type	<p>Current OkACTE members and their spouses are included in one pool. Each person, member and/or spouse, will be listed as a MBP participant, and will be required to pay the \$10 fee per death</p> <p><i>Upon the death of the OkACTE member, the membership of the spouse is terminated</i></p>
Cost to Participate	<p>\$20.00 to enroll + \$20.00 to get two deaths ahead in the program= \$40</p> <p><u>All MBP participants</u> will pay \$10.00 per death after initial fees are paid</p>
Staying Active in MBP	Membership must be current with OkACTE and payments received before 60-day drop date
Billing/Payments	<p>CCOSA bills all participants \$10.00 after a death occurs</p> <p>Participants have 60 days after a death to pay their \$10.00 and stay active in MBP</p> <p><u>Participants are dropped from the program after 60 days of non-payment</u></p>
Returning to Active Status	In order to return to active status the individual would pay a \$30.00 reinstatement fee + \$20.00 to get two deaths ahead in the program
Payout to Beneficiary	95% of monies in pool distributed to designated MBP participant beneficiary
Available Funds	MBP will always be two deaths ahead in the fund

How to Register:

- Log onto the OkACTE website, www.okacte.org
- Go to Membership Information Page
- Select Mutual Benevolence
- Select Register in the CCOSA/OkACTE Mutual Benevolence Plan

Recent claims--Coverage A

An insured member was named in a lawsuit alleging a plaintiff was strip searched for suspected marijuana possession. This occurred in the presence of the principal. Due to the conflict of interest, the district would not defend the member. Over \$60,000 has been paid to date by this policy.

A lawsuit with allegations that a member both physically and verbally harmed a special needs student is pending and defensible. The school district settled the case to its limit of coverage. More than \$500,000 has been paid on the member's behalf.

A lawsuit was filed after a school sporting event alleging hazing/bullying of a student on a bus. Expenses and reserves exceed \$75,000.

Recent claims--Coverage B

Sexual Misconduct – alleged inappropriate conduct with a female student. The attorney was reimbursed to the limit of Coverage B for defense of the member. Retainer was paid on behalf of the insured prior to guilt or innocence being determined.

A teacher was terminated from his coaching position due to alleged violation of school regulations. He was successfully defended and retained employment. His attorney was reimbursed \$5,000.

Supervising General Agent

MYRON STEVES
EDUCATORS LIABILITY

September 13, 2018

EDUCATORS PROFESSIONAL LIABILITY INSURANCE

Available to members of:



Offered by:

OkACTE
2801 N Lincoln Blvd Ste 130
Oklahoma City, OK 73105
405.525.8906

Underwritten by Carrier rated A+

EDUCATORS PROFESSIONAL LIABILITY INSURANCE

Available to members of:



COVERAGE A - Liability Insurance

Up to \$1,000,000 per insured per occurrence/\$3,000,000 per occurrence, plus the cost of defense, investigation and legal fees

Applies in the event a member is alleged to have caused injury or damage to others while performing his/her professional duties.

Errors and omissions insurance for claims for damages arising out of a member's duties as a professional educator, including all defense costs.

Note: The duty of the insurer to defend extends even to groundless, false and frivolous suits and accusations.

COVERAGE B - Reimbursement of Attorney Fees

Up to \$5,000 per claim, per insured

The policy provides reimbursement of attorney fees in a broad range of situations not included under Coverage A. This includes allegations of criminal and/or sexual misconduct and employment related actions against an educator involving dismissal, revocation of certification and other professional rights and duties.

In actions involving termination, salary, reassignment, certification or resignation, the matter in dispute must be resolved in favor of the member to qualify for the full reimbursement of \$5,000. However, \$1,000 of this amount is available for initial consultation and research, whether or not the member prevails, to determine if there exists a reasonable chance of the case being resolved in the member's favor.

COVERAGE C - Bail Bonds

Up to \$1,000 premium on bail bonds

COVERAGE - Identity Theft

Up to \$10,000 per claim

THIS IS NOT A CERTIFIED COPY OF THE POLICY BUT A SUMMARY AND IS PROVIDED FOR REFERENCE ONLY. ALL COVERAGE PROVIDED UNDER THE TERMS OF THE POLICY IN THE EVENT OF A LOSS OR OCCURRENCE IS SUBJECT TO THE EXCLUSIONS AND CONDITIONS CONTAINED IN THE MASTER POLICY ON FILE WITH THE POLICYHOLDER, INCLUDING ALL AMENDMENTS, ENDORSEMENTS, AND ADDITIONS.

FREQUENTLY ASKED QUESTIONS

Why is professional educator insurance valuable to me as an educator?

A professional educator policy will guard you against financial devastation in the event you are named in a serious lawsuit arising in the course and scope of your responsibilities as an educator. Facts tell us that litigation against schools and educators has risen significantly in the recent years. In today's educational climate, it is as important to insure your professional career as it is to insure your car, your home and your health.

Will my school district not have liability insurance?

The district's policy covers the district first and foremost, and in certain circumstances, its plan will not cover you or your legal fees. In today's litigious environment with respect to education, it is only wise to have your own insurance coverage in place that names you as the insured party. Additionally, the school district's policy limits may be exhausted quickly in any given lawsuit. Our policy provides extra protection in the event the district's limits are insufficient to pay your claim.

What is covered under the policy?

You are protected against a broad range of exposures, such as:

- Injury to a student
- Allegations of improper conduct with a student
- Violation of a student's civil rights
- Failure to educate
- Improper methods of instruction
- Failure to promote a student or grant credit
- Hiring unqualified persons

When does my insurance policy respond?

Our form is occurrence-based, which means as long as the occurrence that resulted in litigation took place while the Educators Professional Liability was in effect, then the policy will respond. Even if you are no longer a member of the association, you will be covered as long as the policy was in force when the incident occurred and you were a member in good standing at that time.



Advocacy

One of OkACTE's major functions is representing the membership before the Oklahoma legislature. The Executive Director works at the Capitol on a daily basis during the legislative session, tracks legislation, educates legislators on career and technology issues, attends meetings and networks with other education organizations.

Every year OkACTE tracks and monitors legislative bills in preparation for Legislative Session. These bills can vary from CareerTech education policy, common education policy, education funding, teacher pay raise, tax credits, licensing, Ad Valorem, retirement, state employee pay raise, guns, economic development and much more. Our goal is to have a pulse on every bill that could positively or negatively impact any area of our system.

OkACTE Legislative Agenda

In preparation for legislative session, the OkACTE Political Action Committee evaluates and approves a list of priorities. These priorities are guidelines that the Executive Director follows during that year's legislative session. Below is the 2021 OkACTE Legislative Agenda.

FUNDING

- Fully fund the Oklahoma Department of Career and Technology Education's 2022 budget request.
- Fully fund the Health Benefit Allowance requirements for all educational entities.
- Ensure the continued funding of the State Ad Valorem Reimbursement Fund.
- Support legislation that provides all taxing jurisdictions an equal voice in the development and approval of economic development incentives such as Tax Increment Financing districts.
- Increase funding for K-12 CareerTech programs.
- Expand the teacher pay scale to 40 years.
- Support the creation of a statewide aerospace training facility and fund existing aviation programs.

GRADUATION REQUIREMENTS

- Eliminate Oklahoma's dual diploma system and replace it with graduation requirements that best prepare students for their careers of choice as identified through the Career Academic Plan (ICAP) process.
- Support eligible courses within comprehensive programs to also count for graduation requirements.
- Support changes in high school graduation requirements to allow CTE programs of study which lead to recognized credentials, to take the place of one math and/or one science credit for any student.

OPEN MEETINGS

- Support changes to the Open Meetings Act that allow districts greater use of distance/virtual tools for public meetings.

WORKFORCE TRAINING & ECONOMIC DEVELOPMENT

- Support legislation to lift the maximum of two technology centers approved annually by CLEET for training academies.
- Support the creation of a statewide aerospace training facility and fund existing aviation programs.
- Support legislation allowing Triple I background checks.

WORK-BASED LEARNING

- Support legislation that reduces employer risk when participating in work-based learning.
- Support expansion of work-based learning opportunities that ensure the availability of a high skilled workforce for Oklahoma employers.

RETIREMENT

- Oppose consolidation of retirement boards.
- Ensure that there are no employment minimums for a non-classified optional employee to join TRS.
- Support a Cost of Living Adjustment for retirees.
- Increase the cap on retired educator earnings.

LEGISLATIVE POSITIONS

OkACTE actively works to promote awareness of the following items for OkACTE membership.

- ◆ Support continued professional development to fully implement the Individualized Career Academic Plans (ICAP) requirement for all students.
 - ◆ Oppose consolidation of retirement boards.
 - ◆ Maintain Teachers Retirement System as a defined benefit plan.
-

OkACTE Events

Leadership Seminar

The leadership seminar is designed to assist division leaders in fulfilling the roles and responsibilities of their office and to the members of their divisions. Leaders are given an opportunity to learn about effective leadership, network with their division officer team and other division leaders, and do strategic planning for the upcoming year.

Diversity Symposium

The OkACTE Diversity Action Committee provides CTE professionals an opportunity to learn about culturally responsive approaches to students and colleagues in the CareerTech setting. This professional development provides expert lead workshops, learning experiences and networking.

OkACTE Excellence

This professional development event offers an opportunity for attendees to experience an unconference. Attendees develop their own agenda and lead their own discussion. This out of the box model is non-conventional, but offers extraordinary end results in new ideas, increased knowledge and a powerful network of new professional relationships.

Legislative & Appropriations Forum

Welcome to the legislative process! This event gives OkACTE members the opportunity to give us input as we define the priorities for Legislative Session. Your voice matters to us, and we value your time and effort to be more involved in the process.

Legislative Seminar

Legislative Seminar provides members with advocacy how-to sessions, which help to continue and strengthen support for CareerTech, time to meet with legislators and advocate for CTE programs and allows an opportunity to have their legislators join them for lunch in the Capitol rotunda.

HR Forum

This is for any CareerTech employee involved in the on-boarding and exiting processes for any CareerTech employee. During the HR Forum, we will cover subjects such as: Benefits of OkACTE membership, the Mutual Benevolence Plan, Professional Liability, and Retiree Membership. Understanding OkACTE Membership Payment Plans and discussion and training for the Positional Membership process.

Business and Industry Day

Business and Industry Day is held annually to honor our industry partners who work one-on-one with our technology center districts. Each partner is recognized for their commitment to work with our technology centers and students. Legislators are invited to attend the event; where our business partners are encouraged to share their CareerTech success stories.

YPCT Leadership

Young Professional of CareerTech events are held to promote networking with fellow Oklahoma CareerTech professionals to allow attendees to explore ways to leverage their professional careers and to gain knowledge in CTE. A meet and greet is held annually during the OK Summit and for the first time, this year, an additional event was held during the school year. The goals of these events are to help with advancing careers and long term retention of our professionals.

ACTE National Policy Seminar

ACTE holds this annual event to provide attendees with policy and advocacy how-to sessions to help them continue to strengthen support for CTE on a national level, dedicate time on Capitol Hill to meet with legislators and advocate for their CTE programs within their home states. The seminar is generally held in March.

Oklahoma Summit

Oklahoma Summit, formerly known as Oklahoma CareerTech Summer Conference, is held annually the first week of August bringing together approximately 4,000 OK CTE professionals. Attendees are given an opportunity to attend professional development sessions, visit the exhibit hall with over 100 vendors, attend spotlight sessions, networking opportunities and attend the general session where fellow CTE professionals are honored for their outstanding accomplishments to our system.

ACTE CareerTech VISION

ACTE's premier conference is a high-quality professional development that provides networking opportunities, educational breakout sessions and direct access to thousands of individuals and organizations representing all facets of career and technical education from across the nation.

MEMBERSHIP FROM NATIONAL TO STATE

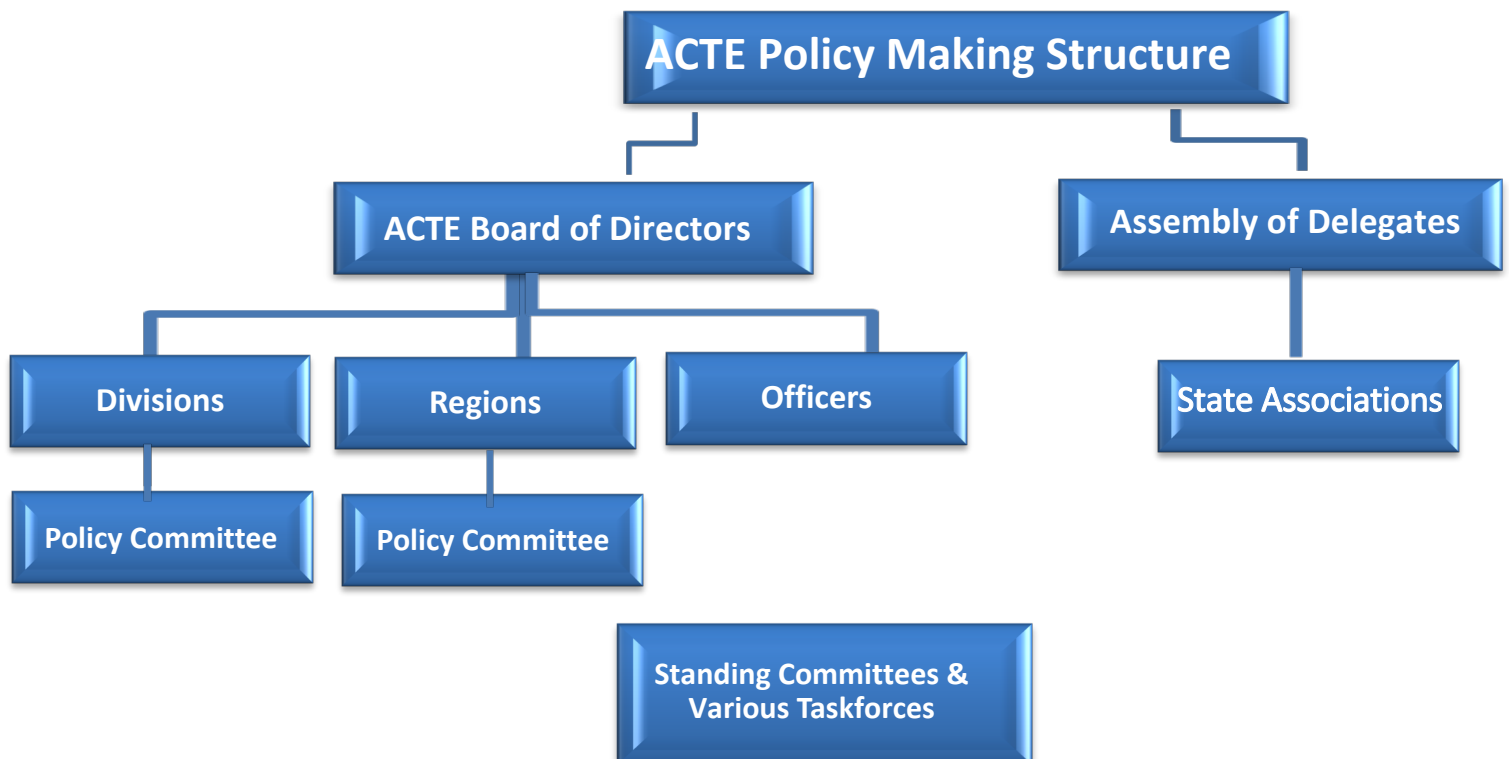
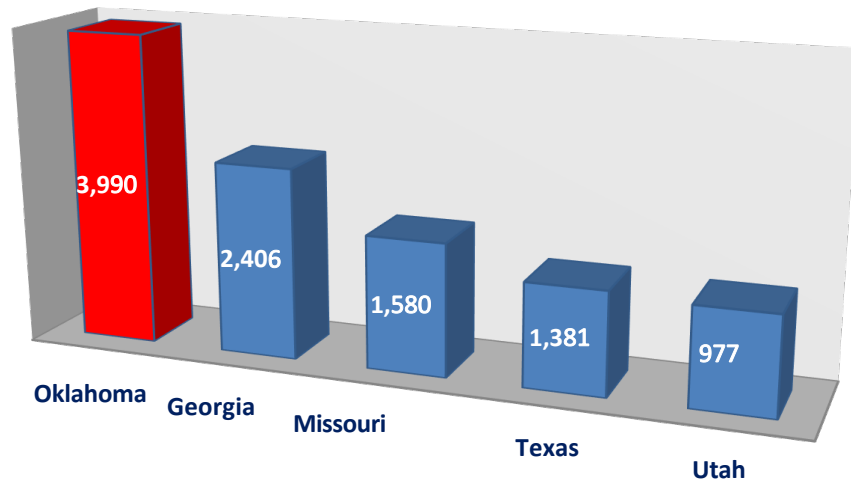


ACTE MEMBERSHIP

OkACTE is a state affiliate of the Association for Career & Technical Education, ACTE. ACTE is the largest national education association of thriving professionals dedicated to the advancement of education that prepares youth and adults for successful careers. ACTE offers individuals actively engaged and employed in the CTE community a wealth of professional development and networking opportunities. OkACTE has a **unified membership** with ACTE, meaning every OkACTE member holds a state and national ACTE membership simultaneously and benefit from involvement at both local and national levels.

Find out more about [ACTE here](#).

ACTE State Membership Comparison



ASSEMBLY OF DELEGATES

OkACTE DIVISIONAL IMPACT NATIONALLY

Divisions have an impact on ACTE through voting delegates and organized states such as Oklahoma that meet and caucus prior to the ACTE Delegates Assembly have a major impact on many issues. For example: the vote to increase ACTE dues and have an ongoing dues increase based on the consumer price index statistics - did not pass after Oklahoma delegates voiced their opinions.

Within each state, every division has ACTE voting delegates; the number is pro-rated for membership, for example:

- Agricultural Education - 2 delegates
- Education Services– Special Populations (ESSP) - 1 delegate
- T & I Education - 2 delegates

*example: the vote to increase ACTE dues and have an ongoing dues increase based on the consumer price index statistics - did not pass after Oklahoma delegates voiced their opinions.

ACTE DIVISIONS

The Association for Career and Technical Education® (ACTE) is organized into 11 Divisions to provide members professional development resources, events and networking opportunities specific to their position or area of expertise. As an ACTE member, you have designated at least one Division when they join ACTE, and an elected Vice President represents each Division on ACTE's Board of Directors. ACTE division titles may differ from the state divisions.

- Administration Division
- Agricultural Education Division
- Business Education Division
- Counseling and Career Development Division
- Engineering and Technology Education Division
- Family and Consumer Sciences Education Division
- Health Science Education Division
- New and Related Services Division
- Postsecondary, Adult and Career Education Division
- Trade and Industrial Education Division

ACTE OKLAHOMA BOARD MEMBERS

Oklahoma has a strong presence within ACTE. We've included a listing of Oklahomans who hold positions with the ACTE National Board as well as ACTE National Officers.



Dr. Doug Major
Meridian Technology Center
ACTE, Past President



Richelle Krumsiek
Tulsa Technology Center
Engineering and Technology Education Division, Vice President

ACTE NATIONAL LEADERSHIP FELLOWSHIP PROGRAM

Two Cohort Types to Enhance the Experience

ACTE's premier leadership development program, the National Leadership Fellowship Program, is expanding its offerings by recruiting a cohort of New Professionals! The New Professionals Fellows will be targeted to members with 2-5 years CTE experience and will provide participants with the leadership, professional and policy skills they need to grow as a CTE and ACTE advocate! ACTE will continue to offer the original Experienced Fellows cohort, which is for members with more than 5 years CTE experience.

To apply for the National Fellowship Programs, please visit their site. The applications are due annually in September.

REGION IV

ACTE REGION IV MEMBERSHIP

As an ACTE member, you are automatically a member of one of five geographic regions. These regions were established to support state associations in providing opportunities for members to get involved at the state and national levels. Each year, regions host their own conferences to provide members with professional development, leadership development and networking opportunities closer to home.

Oklahoma is a member of Region IV along with the following states:

- [Arkansas](#)
- [Louisiana](#)
- [Mississippi](#)
- [New Mexico](#)
- [Texas](#)

REGION IV COMMITTEES

Audit Review Committee

Volunteer Commitment: 3-5 hours per year, 3 years (July 1–June 30)

Impact of Work: Committee members are primarily responsible for ensuring the Association's financial statements and disclosures are validated and to evaluate the Association's accounting procedures and to oversee ACTE's financial reporting, internal control and audit processes.

Expertise Required: Financial experience is required.

Awards Committee

Volunteer Commitment: 50+ hours per year, 2 years (July 1–June 30)

Impact of Work: Committee members review and score applications for the ACTE Excellence Awards and collectively determine national award winners. The committee is responsible for maintaining national application requirements, criteria, and rubrics, and providing input on ways to further improve processes and recognition for award winners.

Expertise Required: Previous experience on an awards committee is strongly recommended

Bylaws Committee

Volunteer Commitment: 5+ hours per year, 2 years (July 1–June 30)

Impact of Work: Committee members are responsible for ensuring the organizational documents of the Association conform to law and are reflective of the desires and needs of members and ensuring appropriate conformity of organizational and operational documents of the Association.

Expertise Required: It is recommended that members of this committee have knowledge of ACTE's organizational structure.

Nominating Committee

Volunteer Commitment: 7+ hours per year, 2 years (July 1–June 30)

Impact of Work: Committee members are responsible for the implementation of the nomination and election process for the governance year. The committee is to abide by the bylaws and approved Policy and Procedures Manual in fulfilling its objectives. The committee is to present at least two candidates for president-elect and ensure all Region and Division vice president candidates meet the required criteria. The entire slate is to be presented to the Assembly of Delegates at ACTE's CareerTech VISION.

Expertise Required: It is recommended that members of this committee have knowledge of ACTE's organizational structure.