

TechLink Newsletter

OTEA's Vision: To provide every student the opportunity to participate in Technology Education and to develop an insight and understanding of the impact of technology on society.

Summer break/ or not?

By **WILLIAM OLLAR**
Editor

We made it its summer time to relax and recoup. Or not? As many of you know summer break means more work, preparation, and planning. But now that it is summer are their enough hours in the day to get everything done? Probably not. For me, its going to be a busy summer with no time to just relax. My movement to the "Project Lead the Way program" meant a summer training institute in Tyler, Texas and the need to move all my classroom stuff to a new school, learn a new building, new staff, and new procedures. Although I am excited and ready for the change, a small part of me will miss the freedom that technology affords us as teachers. The GTT program that is part of PLTW has specific units and many things I really like, but it will be more in depth and require more time on theory and labs than I am use to . Not to complain, but do we actually get a summer



break or not? No we as teachers especially career tech teachers need to spend our time gaining as much information and attending as many training opportunities as we can. I know everyone has other things to do I'm no different, I have several odd jobs to take care of , as well as keeping the lawn mowed, but our purpose is to provide instruction and awareness to our students and how can we do that if our summer does not include some training? In short it cannot. Oh well enough with this tangent; I hope everyone is having a great summer, and getting to do a few things to earn the well de-

served RR that teachers need. As for me I look forward to the changes and challenges, but I think this newsletter will benefit from someone who has a little more time to devote to it. **So in writing I am informing everyone that this is my last issue as Editor,** I would like to thank everyone who has taken the time to submit articles and information. And to the rest of you **"GET OFF YOUR DUFF'S AND WRITE SOMETHING FOR THE TECHLINK!"** **YOU MAKE YOUR STUDENTS WRITE SO LEAD BY EXAMPLE!**

Sincerely W. Ollar

Inside this issue:

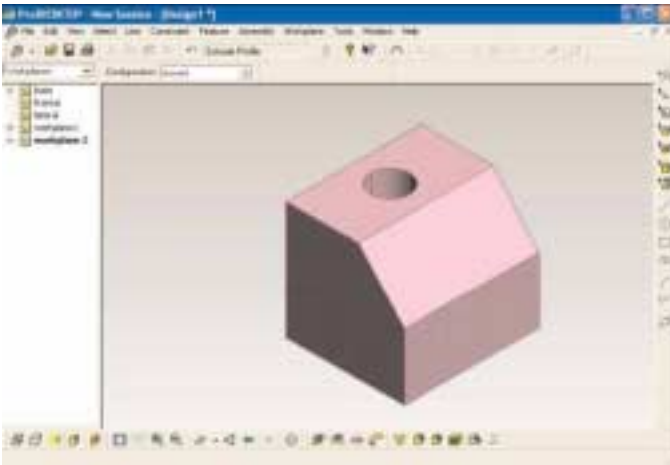
Pro Desktop Tips	2-3& 7
New Teacher Info	4
Special Thanks	4&5
PLTW	5
Calendar of Events	6
Advertisements	6

TechLink is the official newsletter of the Oklahoma Technology Education Association. It is published three times a year. For information about advertising, contact William Ollar at wollar@cox.net or ollarwi@tulsaschools.org or call 918-794-4461.

Editors

William Ollar ollarwi@tulsaschools.org
Becky Ollar ollarre@tulsaschools.org

Pro Desktop Tips



Designing projects in 3D has many advantages because at any time during the design process the project may be rotated giving the designer an accurate view from all sides and angles. This offers a realistic view of how the design looks as it evolves. A team working collaboratively on a design project will be able to gain a better sense of what an evolving project will look like enabling better design decisions throughout the process.

In some cases the 3D design can be produced directly via

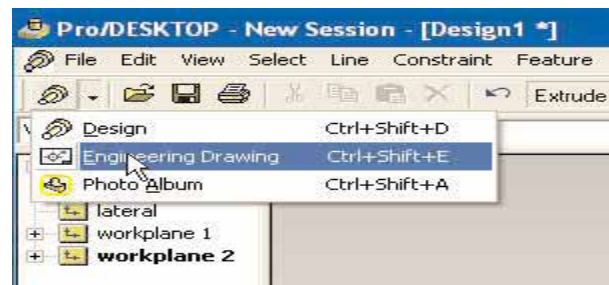
Computer Numerically Controlled machines (CNC), however nearly all manufacturing process still require an Engineering drawing to effectively communicate the design as an aid to manufacture and inspection. These drawings should contain the dimensional and tolerance information required to produce the product in a manufacturing environment.

Producing an Engineering drawing in Pro/DESKTOP is very easy, and demonstrates one of the key benefits of 3D Solid Modeling. In a 2D CAD system the user has to try to visualize what their design looks like from different directions and then create the 2D geometry manually. With a simple click of the mouse, Pro/DESKTOP can automatically produce a drawing with the traditional orthographic views and add views of the

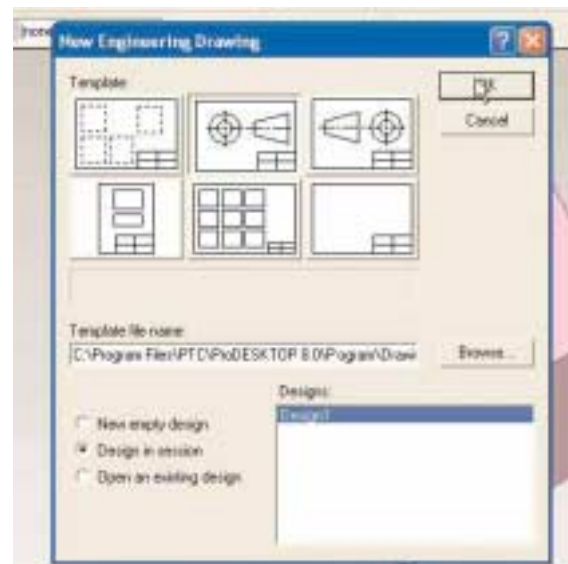
project from any angle the user requires. Each and every view created is 100% accurate and dimensions can be added quickly and simply. The following few steps will demonstrate how to start this process...

In this example, a simple block incorporating a hole and a beveled edge is used to show how differing views and hidden lines will be rendered in the 3 view drawing.

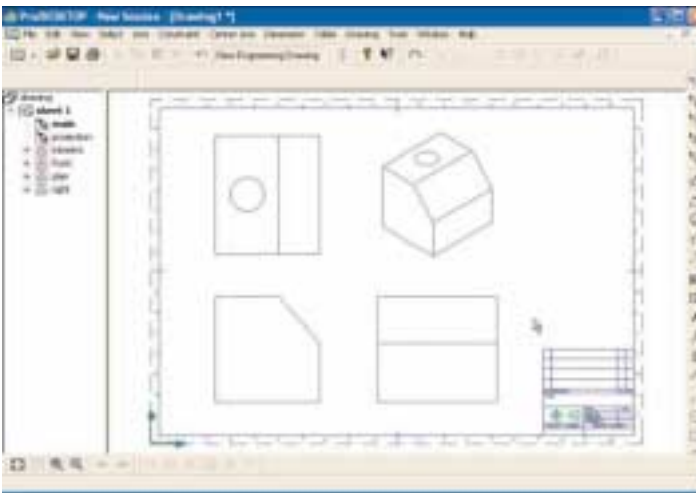
With the Design page open move the mouse to the dropdown menu in upper left hand corner of the page. Select Engineering Drawing.



The New Engineering Drawing dialog box will appear, from which you will select **Design in session** and the upper left drawing layout; click OK.

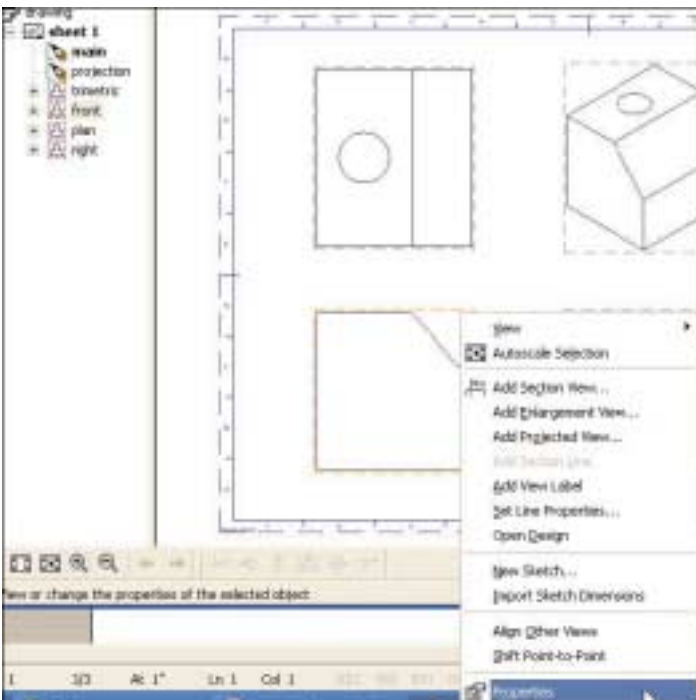


Creating 3 View Drawings from Pro/DESKTOP



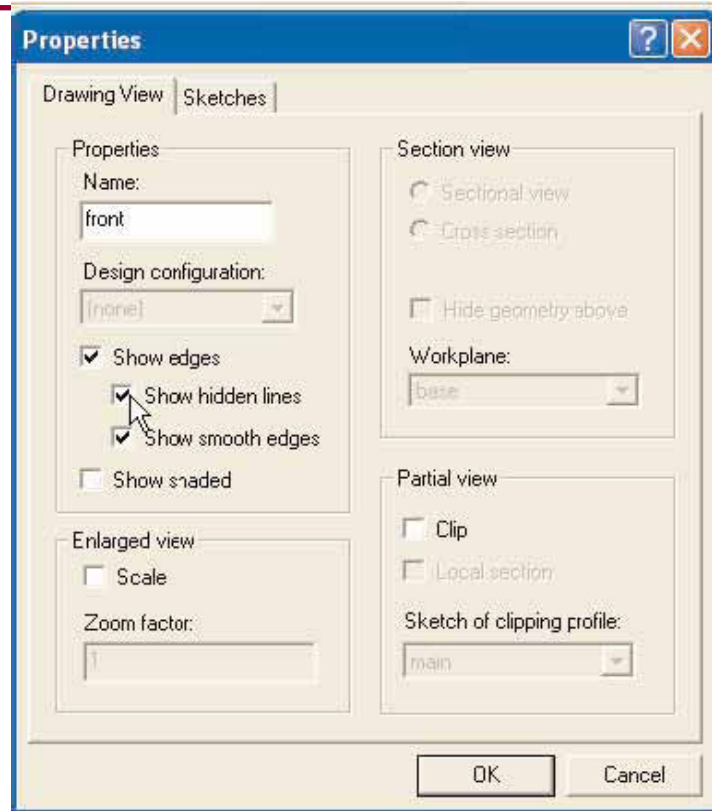
A new drawing has been created showing Front, Plan, Right and Trimetric views.

To show the hidden lines in the drawing, click on any of the views in the left hand history column. Dotted selection lines will now appear around each of the views.

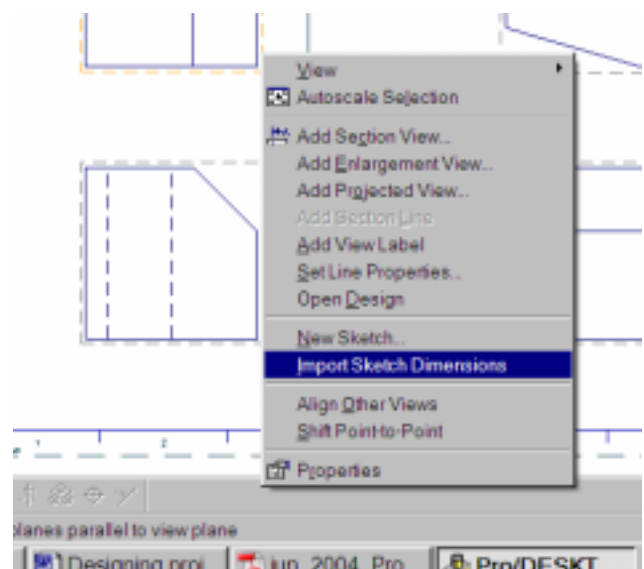


Right click on a dotted red line and select Properties. You will need to do this to each of the drawings.

In Properties, check Show Hidden Lines. Hidden lines will now appear in that view.



To Dimension the drawing, you can begin by importing dimensions from your original sketch designs, once again you will need to select the view you want to im-



New Teacher Academy in Stillwater

ALL New Teachers will meet at Meridian Technology Center, 1312 S. Sangre Rd. Stillwater (1/2 Mile south of the intersection of State Highway 51 and Sangre Rd. [western edge of Stillwater, 1 mile west of Western, 2nd traf-

fic light if approaching from the west]) in the Fred Schulz Conference Center (north end of main building) If you're a new Career Tech teacher, A returning Tech. Teacher, or just need a refresher then I argue you to sign up and attend the new

teacher academy, and share your Ideas and insights as well as just network and meet the new teachers.

The pictures below are from last years academy.



Special Thanks

A special thanks goes out to all the vendors and representatives who were at summer conference.

Oklahoma Employees Credit Union, Oklahoma Project WILD, Oklahoma Wind power Initiative, Oklahoma School Assurance Group, Oklahoma State Department of Education, Oklahoma State University, OneNet, OSU-Oklmulgee, Ozark Delight

Candy Coperation, Palmer Binding Systems, Parke Systems, Performance Learning Systems, Inc. Precision Business Machines, Prentice Hall, Prentice Hall/DDC Publishing, Prosoft Learning Coperation, QSP/Reader's Digest, Recognition Company, Regal Fund-Raising, Rogers State University, SBC/ATT, School-Speciality, Schools Attuned in Oklahoma, Smart Technolo-

gies, Inc., Southern Nazarene University, Speaking Solutions, Inc., Spectrum Industries, Inc. Stephanie's Stuff, Sue Croft Candles, Sunglo Feeds, Talking Leaves Job Corps, Teaching Systems, Inc. Teachware, U.S. Army Recurting Battalion, Uniform Shoppe, Universal Laser Systems, Inc. University of Central Oklahoma, More on next page.

SPECIAL THANKS

Video Reality, Virco, Inc. Visionality— Designs that compute, Welsh Products, Inc. Whitton Supply, You-Niquely Yours. And any others I may have missed. As professionals we look forward to meeting, and working with our vendors to provide our students with the best opportunities available.

AND AS ALWAYS A BIG THANKS To:

Oklahoma Department of Career and technology Education, The Oklahoma Technology Education Association Board and its Oklahoma counterpart.

And to each and every Career Tech Teacher.

Due to the huge success of Year 1 which resulted in 1,000 new ITEA members...



are offering for a second year - Professional membership for \$25.

(For NEW Professional members and members lapsed 3+ years.)

- Receive *8 issues of The Technology Teacher, the leading professional journal of technology education,*
- Receive *Professional Liability insurance coverage in the amount of \$250,000.*
- Receive *24-hour electronic feedback and connection to online resources* to help with any professional question or classroom need.

Go to www.iteaawww.org and click on the link under the Paxton/Patterson logo.

Don't wait! Join today!

Grant Opportunities

A few grant opportunities to pass along.

Keefe Brown brown@aws.com
\$6,000 weather station grants available to Oklahomaschools

Best Buy Grants
www.bestbuy.com/community-relations/grants.htm

http://techlearning.com/resources/results/grants.jhtml?start=1&howMany=10&grant_type=5

MSN/grants to educators

<http://www.epa.gov/enviroed/grants.html>

<http://www.fundsnet services.com/educ01.htm>

<http://eelink.net/pages/Grants++General+Information>



Project Lead the Way FYI

Project Lead The Way Inc. (PLTW) is a national program forming partnerships among Public Schools, Higher Education Institutions and the Private Sector to increase the quantity and quality of engineers and engineering technologists graduating from our education system. First developed in the 1980's by Richard Blais who was then chairman of the Technology Department of an upstate New York school district, PLTW is now offered in over 45 states and the District of Columbia.

PLTW has developed a four year sequence of courses which, when combined with college preparatory mathematics and science courses in high school, introduces students to the scope, rigor and discipline of engineering and engineering technology prior to entering college.

The courses are:

- Introduction to Engineering Design
- Digital Electronics
- Principles of Engineering
- Computer Integrated Manufacturing
- Civil Engineering and Architecture
- Biotechnical Engineering (in development)
- Aerospace Engineering (in development)
- Engineering Design and Development

Calendar of Events

JUNE 2006

June 1-3 CareerTech University (State Officers Only)

June 21-25 TSA Nationals -"TSA, Pathway to Tomorrow", Adams Mark Hotel, Dal-

JULY 2006

July 17-21 TE New Teacher In-Service

AUGUST 2006

August 1-3 August Conference-Tulsa

[Link to the Technology Education calendar](#)

Custom Craft Awards

Trophies, Plaques, Laser Engraving



10% off

for all
Oklahoma schools
Expiration: June 2006

9535-B East 47th Place
Tulsa, OK 74145

918-622-2377

sfm@customcraftawards.com

Learn Electronics and "Be Worth More!"



www.GibsonTechEd.com

Call for a FREE catalog
1-800-422-1100

